

Erratum

Erratum to “Determination of thymidine phosphorylase activity
by a non-radiochemical assay using reversed-phase
high-performance liquid chromatography”
[J. Chromatogr. B 820 (2005) 271–275]

André B.P. van Kuilenburg*, Lida Zoetekouw

Academic Medical Center, University of Amsterdam, Emma Children’s Hospital and Department of Clinical
Chemistry, PO Box 22700, 1100 DE Amsterdam, The Netherlands

Received 21 February 2005; accepted 18 April 2005

The Publisher regrets that a typographical error occurred in [Figure 1](#) of the paper listed above. Please find the correct [Figure 1](#) below.

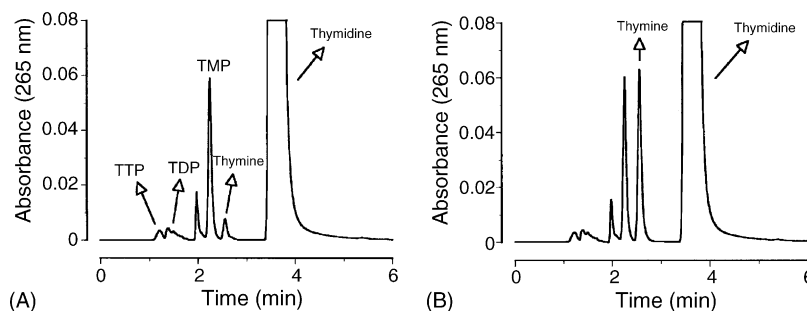


Fig. 1. HPLC elution profile of a reaction mixture. Panel A shows the elution profile of a reaction mixture prior to the start of the incubation. Panel B shows the elution profile of the same reaction mixture obtained after incubation at 37 °C for 1 h.

DOI of original article: [10.1016/j.jchromb.2005.04.009](https://doi.org/10.1016/j.jchromb.2005.04.009).

* Corresponding author at: Academic Medical Center, Laboratory Genetic Metabolic Diseases, F0-224, Meibergdreef 9, 1105 AZ Amsterdam, The Netherlands. Tel.: +31 205665958; fax: +31 206962596.

E-mail address: a.b.vanKuilenburg@amc.uva.nl (A.B.P. van Kuilenburg).